

84 Northfield Avenue, London, W13 9RR

020 8840 5151



Share of Freehold / Apartment

Whitestile Road

£465,000

A newly renovated two double bedroom first floor apartment, offered with a share of freehold and no onward chain.

- Two double bedrooms
- Local amenities on the doorstep
- Chain free
- Recently renovated throughout
- Excellent schools and transport links



Share of Freehold / Apartment

Whitestile Road, TW8 9NJ

£465,000

Recently renovated throughout, this lovely conversion flat, split over two levels is bursting with natural light. Offered on a chain-free basis, this first floor apartment comprises of two double bedrooms, kitchen, living room and bathroom.


Running along the boarder of 'Little Ealing', this property is just a moments walk from Little Ealing, Mount Carmel and Ealing Fields schools and well placed for the local shops and other amenities. This property also has great transport links into Central London whether that's via the Piccadilly Line stations of South Ealing and Northfields or the M4 motorway.

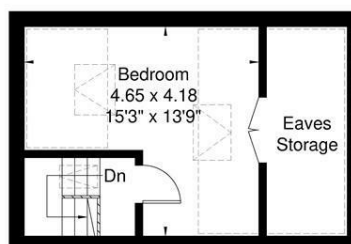


Whitestile Road

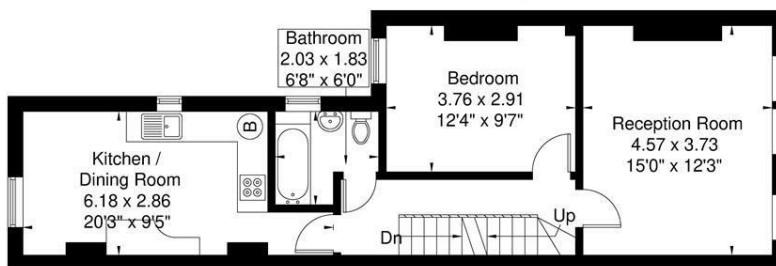
Approximate Gross Internal Area = 67.1 sq m / 721 sq ft.
Eaves Storage / Reduced Headroom = 16.3 sq m / 175 sq ft
Total = 83.4 sq m / 896 sq ft.



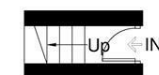
 = Reduced headroom below 1.5m / 5'0"



Second Floor
10.1 sq m / 108 sq ft
Eaves Storage / Reduced Headroom
16.3 sq m / 175 sq ft



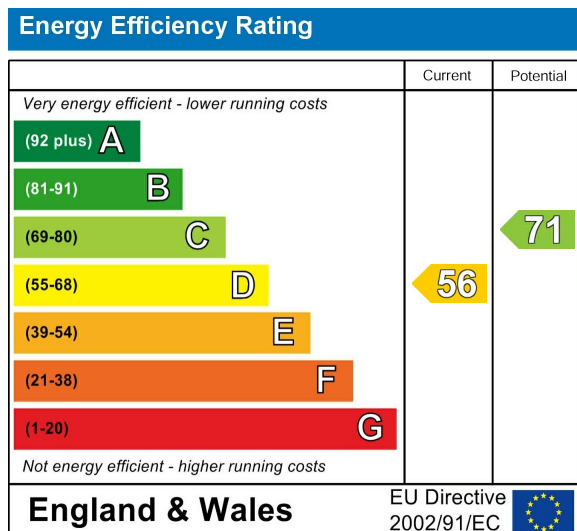
First Floor
55.4 sq m / 596 sq ft



Ground Floor
1.6 sq m / 17 sq ft

Although every attempt has been made to ensure accuracy, all measurements are approximate. The floorplan is for illustrative purposes only and not to scale.
© www.perspective.co.uk

Energy Performance Graph



Call us on

020 8840 5151

northfieldsales@sintonandrews.co.uk
www.sintonandrews.co.uk

Agents Note: Whilst every care has been taken to prepare these particulars, they are for guidance purposes only. All measurements are approximate and are for general guidance purposes only and whilst every care has been taken to ensure their accuracy, they should not be relied upon and potential buyers are advised to recheck the measurements.